

HEAT KIT DATA

MODEL	CIRCUIT 1			CIRCUIT 2			SINGLE-POINT KIT	
	AMPS	MCA ¹	MOP ²	AMPS	MCA ¹	MOP ²	MCA ¹	MOP ²
ASPT24B14AC	0 / 0	3/3	15 / 15	---	---	---	---	---
HKS*03XC*	10.8 / 12.5	17 / 19	20 / 20	---	---	---	--	--
HKS*05XC*	17.3 / 20.0	25 / 28	25 / 30	---	---	---	--	--
HKS*06XC*	21.7 / 25.0	30 / 34	35 / 35	---	---	---	--	--
HKS*08XC*	28.9 / 33.3	39 / 45	40 / 45	---	---	---	--	--
HKS*10XC*	34.7 / 40.0	46 / 53	50 / 60	---	---	---	--	--
HKSC15*##	34.7 / 40.0	46 / 53	50 / 60	17.3 / 20	22 / 25	25 / 25	68 / 78	70 / 80
ASPT30C14AB	0 / 0	3.9 / 3.9	15 / 15	---	---	---	--	--
HKS*03XC*	10.8 / 12.5	17 / 20	20 / 20	---	---	---	--	--
HKS*05XC*	17.3 / 20.0	26 / 29	30 / 30	---	---	---	--	--
HKS*06XC*	21.7 / 25.0	31 / 35	35 / 40	---	---	---	--	--
HKS*08XC*	28.9 / 33.3	40 / 46	40 / 50	---	---	---	--	--
HKS*10XC*	34.7 / 40.0	47 / 54	50 / 60	---	---	---	--	--
HKSC15*##	34.7 / 40.0	47 / 54	50 / 60	17.3 / 20	22 / 25	25 / 25	69 / 79	70 / 80
ASPT36C14AC	0 / 0	4/4	15 / 15	---	---	---	--	--
HKS*03XC*	10.8 / 12.5	17 / 20	20 / 20	---	---	---	--	--
HKS*05XC*	17.3 / 20.0	26 / 29	30 / 30	---	---	---	--	--
HKS*06XC*	21.7 / 25.0	31 / 35	40 / 40	---	---	---	--	--
HKS*08XC*	28.9 / 33.3	40 / 46	40 / 50	---	---	---	--	--
HKS*10XC*	34.7 / 40.0	47 / 54	50 / 60	---	---	---	--	--
HKSX15XF*	0/0	4/4	15/15	30/34.6	38/43	40/45	--	--
HKSX20XF*	0/0	4/4	15/15	38/43	47/54	50/60	--	--
HKSC15*##	34.7 / 40.0	47 / 54	50 / 60	17.3 / 20	22 / 25	25 / 25	69 / 79	70 / 80
HKSC19*##	34.7 / 40.0	47 / 54	50 / 60	34.7 / 40	43 / 50	45 / 50	91 / 104	100 / 110
HKSC15XF*	0/0	4/4	15/15	30/34.6	38/43	40/45	--	--
HKSC20XF*	0/0	4/4	15/15	38/43	47/54	50/60	--	--
ASPT42C14A	0 / 0	4/4	15 / 15	---	---	---	--	--
HKS*03XC*	10.8 / 12.5	17 / 20	20 / 20	---	---	---	--	--
HKS*05XC*	17.3 / 20.0	26 / 29	30 / 30	---	---	---	--	--
HKS*06XC*	21.7 / 25.0	31 / 35	35 / 40	---	---	---	--	--
HKS*08XC*	28.9 / 33.3	40 / 46	40 / 50	---	---	---	--	--
HKS*10XC*	34.7 / 40.0	47 / 54	50 / 60	---	---	---	--	--
HKSX15XF*	0/0	4/4	15/15	30/34.6	38/43	40/45	--	--
HKSX20XF*	0/0	4/4	15/15	38/43	47/54	50/60	--	--
HKSC15*##	34.7 / 40.0	47 / 54	50 / 60	17.3 / 20	22 / 25	25 / 25	69 / 79	70 / 80
HKSC19*##	34.3 / 40.0	47 / 54	50 / 60	34.7 / 40	43 / 50	45 / 50	91 / 104	100 / 110
HKSC15XF*	0/0	4/4	15/15	30 / 34.6	38 / 43	40 / 45	--	--
HKSC20XF*	0/0	4/4	15/15	38 / 43	47 / 54	50 / 60	--	--
ASPT48C14AD	0 / 0	7 / 7	15 / 15	---	---	---	--	--
HKS*03XC*	10.8 / 12.5	20 / 22	25 / 25	---	---	---	--	--
HKS*05XC*	17.3 / 20.0	28 / 32	30 / 35	---	---	---	--	--
HKS*06XC*	21.7 / 25.0	34 / 38	35 / 40	---	---	---	--	--
HKS*08XC*	28.9 / 33.3	43 / 48	45 / 50	---	---	---	--	--
HKS*10XC*	34.7 / 40.0	50 / 57	60 / 60	---	---	---	--	--
HKSX15XF*	0/0	8/8	15/15	30/34.6	38/44	40/45	--	--
HKSX20XF*	0/0	8/8	15/15	38/43	47/54	50/60	--	--
HKSC15*##	34.7 / 40.0	50 / 57	60 / 60	17.3 / 20	22 / 25	25 / 25	72 / 82	80 / 90
HKSC19*##	34.3 / 40.0	50 / 57	60 / 60	34.7 / 40	43 / 50	45 / 50	93 / 107	100 / 110
HKSC15XF*	0/0	4 / 4	15 / 15	30 / 34.6	38 / 43	40 / 45	--	--
HKSC20XF*	0/0	4 / 4	15 / 15	37 / 43	47 / 54	50 / 60	--	--

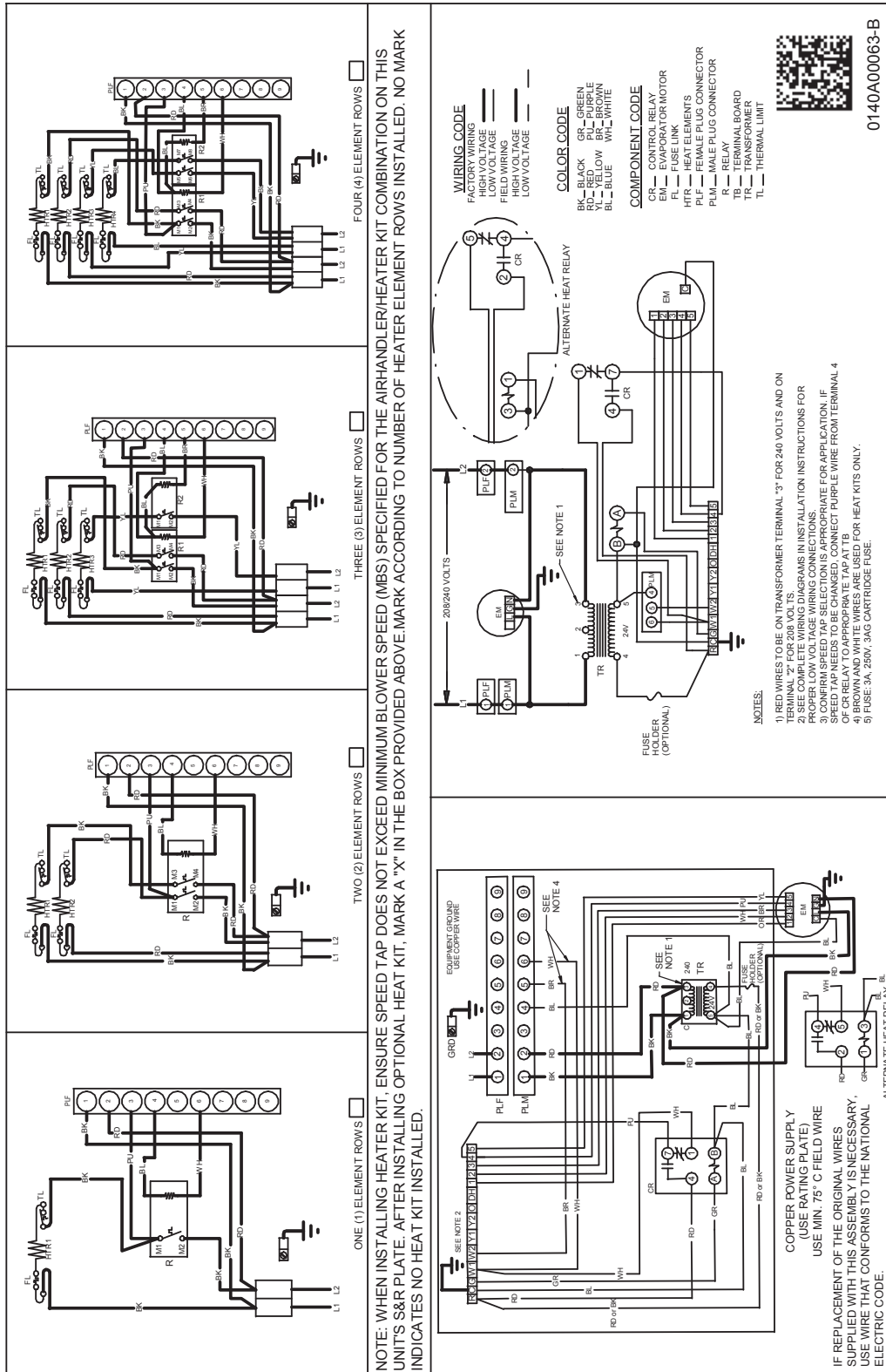
HEAT KIT DATA (CONT.)

MODEL	CIRCUIT 1			CIRCUIT 2			SINGLE-POINT KIT	
	AMPS	MCA ¹	MOP ²	AMPS	MCA ¹	MOP ²	MCA ¹	MOP ²
ASPT42D14AC	0 / 0	6/6	15 / 15	---	---	---	--	--
HKS*03XC*	10.8 / 12.5	20 / 22	20 / 25	---	---	---	--	--
HKS*05XC*	17.3 / 20.0	28 / 31	30 / 35	---	---	---	--	--
HKS*06XC*	21.7 / 25.0	33 / 37	35 / 40	---	---	---	--	--
HKS*08XC*	28.9 / 33.3	42 / 48	45 / 50	---	---	---	--	--
HKS*10XC*	34.7 / 40.0	49 / 56	50 / 60	---	---	---	--	--
HKSX15XF*	0/0	6/6	15/15	30/34.6	38/43	40/45	--	--
HKSX20XF*	0/0	6/6	15/15	38/43	47/54	50/60	--	--
HKSC15*##	34.7 / 40.0	49 / 56	50 / 60	17.3 / 20	22 / 25	25 / 25	71 / 81	80 / 90
HKSC20*##	34.3 / 39.6	49 / 56	50 / 60	34.7 / 40	43 / 50	45 / 50	93 / 106	100 / 110
HKSC15XF*	0/0	6/6	15/15	30 / 34.6	38 / 43	40 / 45	--	--
HKSC20XF*	0/0	6/6	15/15	38 / 43	47 / 54	50 / 60	--	--
ASPT48D14AD	0 / 0	8/8	15 / 15	---	---	---	--	--
HKS*03XC*	10.8 / 12.5	22 / 24	25 / 25	---	---	---	--	--
HKS*05XC*	17.3 / 20.0	30 / 33	30 / 35	---	---	---	--	--
HKS*06XC*	21.7 / 25.0	35.4 / 40	40 / 40	---	---	---	--	--
HKS*08XC*	28.9 / 33.3	44 / 50	45 / 50	---	---	---	--	--
HKS*10XC*	34.7 / 40.0	52 / 58	60 / 60	---	---	---	--	--
HKSX15XF*	0/0	8/8	15/15	30/34.6	38/43	40/45	--	--
HKSX20XF*	0/0	8/8	15/15	38/43	47/54	50/60	--	--
HKSC15*##	34.7 / 40.0	52 / 58	60 / 60	17.3 / 20	22 / 25	25 / 25	73 / 83	80 / 90
HKSC20*##	34.3 / 39.6	52 / 58	60 / 60	34.7 / 40	43 / 50	45 / 50	95 / 108	100 / 110
HKSC15XF*	0/0	8/8	15/15	30/34.6	38/43	40/45	--	--
HKSC20XF*	0/0	8/8	15/15	38/43	47/54	50/60	--	--
HKSC25*##	52 / 60	73 / 83	80 / 90	34.7 / 40	43 / 50	45 / 50	117 / 133	125 / 150
ASPT60D14AC	0 / 0	8.3 / 8.3	15 / 15	---	---	---	--	--
HKS*03XC*	10.8 / 12.5	22 / 24	25 / 25	---	---	---	--	--
HKS*05XC*	17.3 / 20.0	30 / 33	30 / 35	---	---	---	--	--
HKS*06XC*	21.7 / 25.0	35 / 40	40 / 40	---	---	---	--	--
HKS*08XC*	28.9 / 33.3	44 / 50	45 / 50	---	---	---	--	--
HKS*10XC*	34.7 / 40.0	52 / 58	60 / 60	---	---	---	--	--
HKSC15*##	34.7 / 40.0	52 / 58	60 / 60	17.3 / 20	22 / 25	25 / 25	73 / 83	80 / 90
HKSC20*##	34.3 / 39.6	52 / 58	60 / 60	34.7 / 40	43 / 50	45 / 50	95 / 108	100 / 110
HKSC15XF*	0/0	8.3 / 8.3	15/15	30/34.6	38/44	40/50	--	--
HKSC20XF*	0/0	8.3 / 8.3	15/15	38/43	47/54	50/60	--	--
HKSC25*##	52 / 60	73 / 83	80 / 90	34.7 / 40	43 / 50	45 / 50	117 / 133	125 / 150
ASPT61D14AC	0 / 0	8.3 / 8.3	15 / 15	---	---	---	--	--
HKS*03XC*	10.8 / 12.5	22 / 24	25 / 25	---	---	---	--	--
HKS*05XC*	17.3 / 20.0	30 / 33	30 / 35	---	---	---	--	--
HKS*06XC*	21.7 / 25.0	35 / 40	40 / 40	---	---	---	--	--
HKS*08XC*	28.9 / 33.3	44 / 50	45 / 50	---	---	---	--	--
HKS*10XC*	34.7 / 40.0	52 / 58	60 / 60	---	---	---	--	--
HKSC15*##	34.7 / 40.0	52 / 58	60 / 60	17.3 / 20	22 / 25	25 / 25	73 / 83	80 / 90
HKSC20*##	34.3 / 39.6	52 / 58	60 / 60	34.7 / 40	43 / 50	45 / 50	95 / 108	100 / 110
HKSC15XF*	0/0	8.3 / 8.3	15/15	30/34.6	38/44	40/50	--	--
HKSC20XF*	0/0	8.3 / 8.3	15/15	38/43	47/54	50/60	--	--
HKSC25*##	52 / 60	73 / 83	80 / 90	34.7 / 40	43 / 50	45 / 50	117 / 133	125 / 150

¹ Minimum Circuit Ampacity (Heater Amps + Motor Amps) X 1.25
² Maximum Overcurrent Protection = 2.25 X Motor Amps + Heater Amps
 ^ Circuit 1: Single-phase for Air Handlers
 Circuit 2: Three-phase for HKR3 Heater Kits

* Revision level that may or may not be designated
 C = Circuit Breaker Option
 --- indicates Not Required

WIRING DIAGRAM – AIR HANDLER



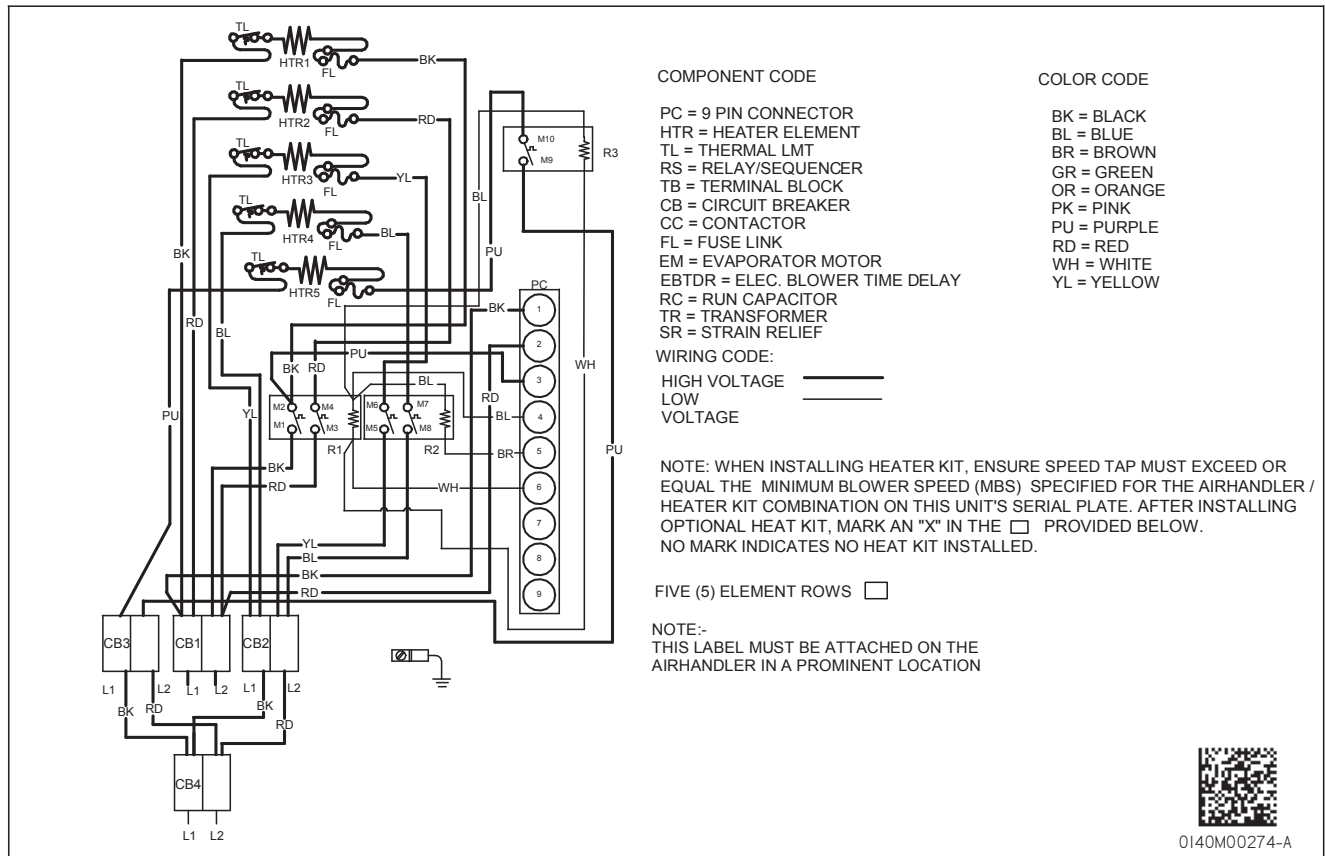
NOTE: The five element, 25 kW heater kit is not SHOWN ABOVE.

Wiring is subject to change. Always refer to the wiring diagram on the unit for the most up-to-date wiring.

WARNING

High Voltage: Disconnect all power before servicing or installing this unit. Multiple power sources may be present. Failure to do so may cause property damage, personal injury, or death.

WIRING DIAGRAM – 5 ELEMENT HEATER KIT



Wiring is subject to change. Always refer to the wiring diagram on the unit for the most up-to-date wiring.

	WARNING	<p>High Voltage: Disconnect all power before servicing or installing this unit. Multiple power sources may be present. Failure to do so may cause property damage, personal injury, or death.</p>	
--	----------------	--	--