

## Specifications

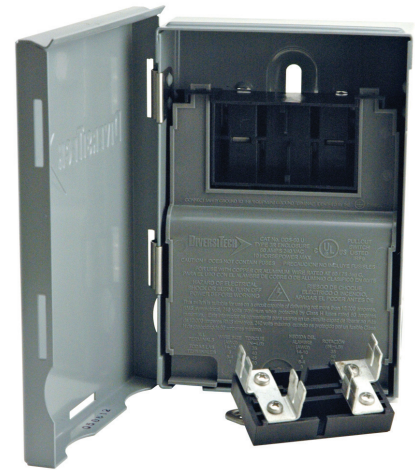
<b>Product</b>	DiversiTech Pull-out Disconnect Switches: DDS-30, DDS-60 (fusible), DDS-60U and EDS-60U (non-fusible)
<b>Application</b>	HVAC circuitry
<b>Power Rating</b>	30A (DDS-30) or 60A at 240VAC, 10 horsepower max
<b>Indoor/Outdoor Use</b>	indoor/outdoor
<b>Package Medium</b>	Metal case with 180 degree opening door
<b>Advantages</b>	Convenient design allows for easy access to controls via wide-opening, reversible door with full dead front. Fused models benefit from having fuses located in easy pull-out handle with indicator lights for blown fuses. Line, load, and ground terminals aligned for easy wiring. EDS-60U Low-profile model also available for tighter spaces.
<b>Directions</b>	Please refer to an electronic copy of this product's brochure at <a href="http://www.diversitech.com/literature/lit-fly-disc.pdf">www.diversitech.com/literature/lit-fly-disc.pdf</a>
<b>HAZMAT Hazard</b>	None.

## Package Metrics

<b>Producer of Goods</b>	DiversiTech
<b>Domestic/Foreign Commodity</b>	Foreign

### SKU Specific Package Metrics

<b>UPC</b>	<b>DDS-30</b> - 095247082445 <b>DDS-60</b> - 095247082452 <b>DDS-60U</b> - 095247082421 <b>EDS-60U</b> - 095247089420
<b>Unit Dimensions</b>	<b>DDS-30</b> - 2-5/8"L x 5"W x 7-1/2"H <b>DDS-60</b> - 2-3/4"L x 5-1/8"W x 8-5/8"H <b>DDS-60U</b> - 2-3/8"L x 5"W x 7-1/2"H <b>EDS-60U</b> - 2-1/2"L x 4.8"W x 6.3"H
<b>Unit Weight</b>	<b>DDS-30</b> - 2.7 lbs. <b>DDS-60</b> - 3.3 lbs. <b>DDS-60U</b> - 2.5 lbs. <b>EDS-60U</b> - N/A
<b>Case Dimensions</b>	<b>DDS-30</b> - 14"L x 11"W x 8-1/4"H <b>DDS-60</b> - 16"L x 11"W x 9-1/4"H <b>DDS-60U</b> - 13"L x 11"W x 8-1/4"H <b>EDS-60U</b> - N/A
<b>Case Weight</b>	<b>DDS-30</b> - 28.6 lbs. <b>DDS-60</b> - 33.7 lbs. <b>DDS-60U</b> - 26.6 lbs. <b>EDS-60U</b> - N/A
<b>Quantity per Package</b>	10



# Pull-out Disconnect Switches